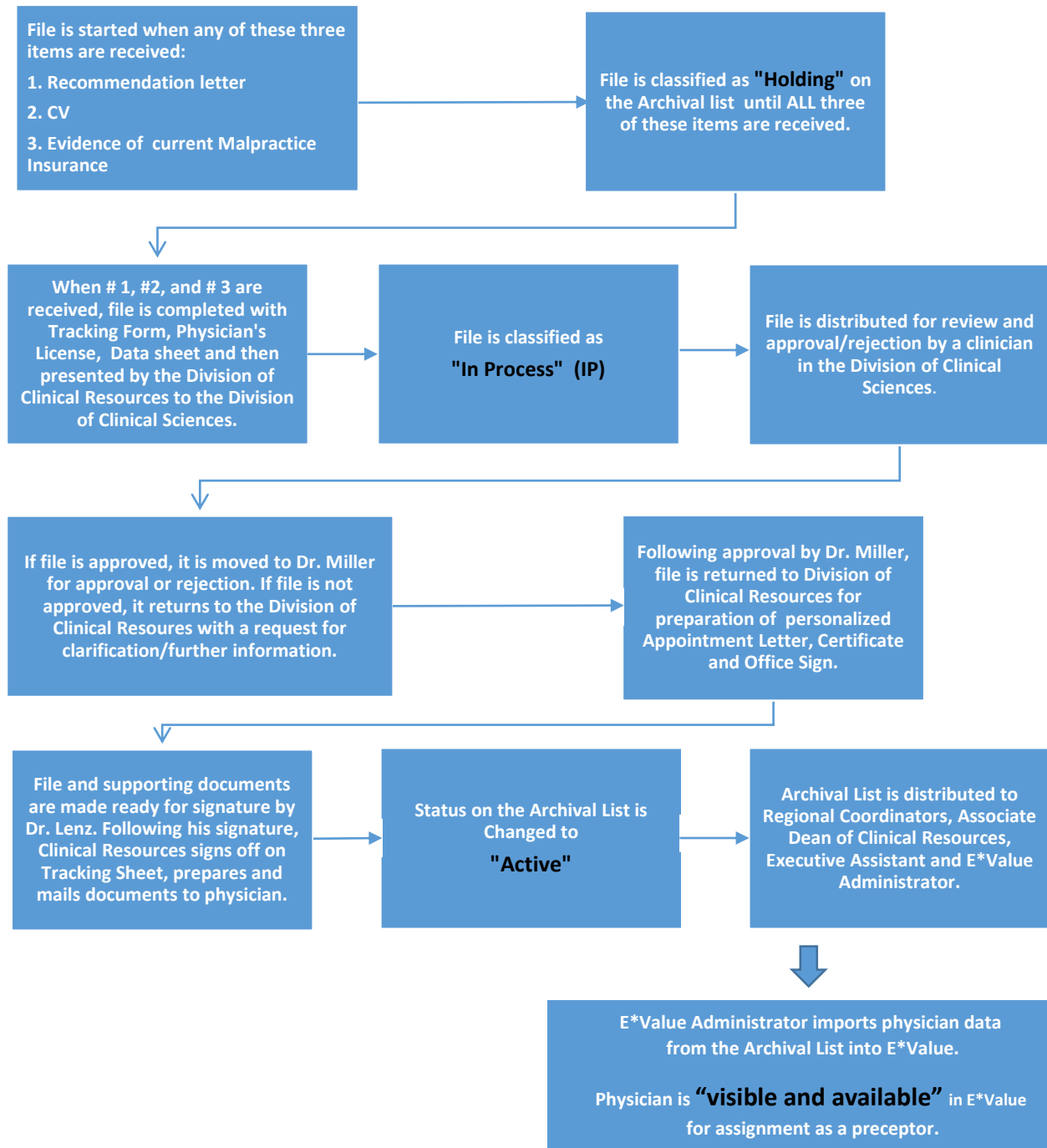


# Preceptor Credentialing: What are the Steps?



**Note:** It is important to recognize that a physician can be credentialed with three documents presented by the core site – recommendation, CV and insurance, plus a copy of the physician's license retrieved by ACOM. However, when a student is assigned to a physician for a clerkship cycle, a MOA is required to identify how payment for services as a preceptor will be rendered. Additionally, if a physician is scheduled to serve as a preceptor, malpractice insurance must be current; ACOM must receive evidence of current insurance when it is noted that the assigned preceptor has expired insurance.